

LYTE

LADDERS | TOWERS



INCLUDES
THE NEW
EN131
PRODUCTS

**ACCESSING
QUALITY**

Product Catalogue | 2022

Lyte Ladders | Our history...

Lyte Ladders and Towers have been manufacturing high quality access products in South Wales for over 70 years. Since its inception in 1947 Lyte has been recognised as one of the leading manufacturers in the trade and industrial sector with a reputation for innovative and quality products.



- ✓ Products are manufactured at Lyte Ladders premises in Swansea Enterprise Park.
- ✓ All products are kitemarked and certified by the British Standards Institute, where applicable to ensure you are getting the best products possible.
- ✓ We also offer a **bespoke service** to provide working at height solutions for a wide range of applications.

This catalogue has been designed to make it easy for you to pick the right product for the job and give you all the relevant information you need.

Work at Height Regulations

The work at height regulations state that duty holders must ensure:

- All work at height is properly planned and organised;
- Those involved in work at height are competent;
- The risks from work at height are assessed and appropriate work equipment is selected and used;
- The risks from fragile surfaces are properly controlled; and equipment for work at height is properly inspected and maintained.

There are many things the Work at Height Regulations state for working at height safely, some key points are:

- Always complete a risk assessment
- Follow the simple hierarchy for managing and selecting equipment for work at height
- Always take steps to eliminate any risk to the user and any other parties working close by
- Ensure those using the equipment are trained and competent to carry out work at height

For further information, instruction manuals or user guides to help you select and use any of our equipment please call us on: **01792 796666** or go to our website: www.lyteladders.co.uk

SAFE USE HEIGHT GUIDE

This is a guide only.



Contents

Product Selection Guide	6
-------------------------------	---

■ STEP LADDERS7

➤ Industrial Aluminium8	Step ladders
➤ Glassfibre Stepladders.....9	
➤ Heavy Duty10	Glassfibre Stepladders
➤ Stepladders11	with Handrails
➤ Widesteps12	
➤ Lightweight Aluminium13	Stepladders

■ EXTENSION15 LADDERS

➤ Domestic DIY16	Extension Ladders
➤ General Trade17	Extension Ladders
➤ Professional Trade18	Extension Ladders
➤ Industrial19	Extension Ladders
➤ Professional Industrial20	Extension Ladders
➤ Aluminium Single21	Section Ladders
➤ Heavy Duty Industrial22	Extension Ladders

■ ROOF LADDERS23

➤ Trade Roof Ladders	24
----------------------------	----

■ LADDER ACCESSORIES ..25 & SPARES

➤ Ladder Stay	26
➤ Articulated Ladder Feet ...	26
➤ Universal Roof Hook	26
➤ Rack Clamps	26
➤ Ladder Pads	26
➤ Step Ladder Feet	26
➤ Ladder Feet	26
➤ Wall Running Wheels	27
➤ Ladder Mat	27
➤ Ladder Tags	27
➤ Rope Kit	27
➤ Ridge Hook	27

■ MULTI-PURPOSE LADDERS28

➤ Lyte Professional29	Combination Ladders
➤ Combination Ladders	30
➤ Lyte 3 Way Ladder	31
➤ Telescopic Ladders	32
➤ Multi-Purpose Ladders	33

Contents | Continued...

■ WAREHOUSE 34	■ STAGING BOARDS, 47
 & FACILITIES ACCESS	 POSTS & HANDRAILS
➤ Fixed Industrial Steps ..35-36	➤ Stagings48
➤ Aluminium37	➤ Staging Board Posts..... 49
Warehouse Steps	& Handrails
■ SPECIALIST 38	■ TOWERS 50
 LADDERS	➤ GRP Lift51
➤ Fruit Picking Tripod39	➤ Lift System52-53
■ LOFT LADDERS 40	➤ Hilyte Leader GRP54-55
➤ Lyte Loft Ladders41	➤ Hilyte 50056-57
■ LOW LEVEL 42	➤ Hilyte 25058-59
 ACCESS	➤ Stairlyte Tower60
➤ Work Platforms43	
➤ LytePod44-45	
Podium Steps	

Lyte Training Solutions	61
PASMA Professional Training	62
Ladder Training	63
Conditions of Sale	64-65
Ladder and Stepladder DOs and DON'Ts	66
STEP Methodology	67
Safe Use of a Scaffold Tower or Mobile Tower	68
Don't risk your own life or the lives of others	69

Product Selection Guide

To help you make the right selection we have devised a classification system to guide you through the products.



HOME USE

Products for infrequent, short duration use in the home. Not for use in a trade environment.



OCCASIONAL TRADE USE

These products are for trade use and are manufactured to take more wear and tear. They are designed for occasional use.



FREQUENT TRADE USE

These products are for trade use and are manufactured to take more wear and tear. They are designed for frequent use.



EXTREME TRADE USE

Products designed to be used under extreme conditions. Made for the trade professional.



EXTREME TRADE - FREQUENT USE

Products designed to be used in a more demanding and extreme environment. These are made for frequent use.



BRITISH MADE

Products made in Britain

Suitable environments



HOME



OFFICE



FACTORY



WAREHOUSE



CONSTRUCTION



RETAIL



ELECTRICAL



ZONE 1

STEPLADDERS



Industrial Aluminium Stepladders	8
Glassfibre Stepladders	9
Heavy Duty Glassfibre Stepladders	10
Stepladders with Handrails	11
Widesteps	12
Lightweight Aluminium Stepladders	13

Industrial Aluminium Stepladders

Stepladders



This range of ladders is ideal for trade use and is tested to a durability test of 50,000 cycles.

- Tested & certified to New EN131-2, Professional
- Improved stiles and strengthened treads as well as reinforced platform inline with the new standard requirements
- Unique strengthening beam incorporated into non-slip treads, rubber feet, and twists as there are no tapes to snap, or flimsy arms to break
- Rigid box section back legs with additional cross braces and 'k' straps for increased strength and stability
- Lightweight and easy to carry
- Lower bottom tread to avoid bending of front feet
- Aluminium top tread
- British Made
- Maximum capacity load of 150kg



Swingback Stepladders

NESS7 pictured

CODE	Open Height (m)	Closed Height (m)	Treads	Weight (kg)
NESS4	0.795	0.900	4	3.50
NESS5	1.010	1.140	5	4.50
NESS6	1.235	1.380	6	5.50
NESS7	1.455	1.620	7	6.00
NESS8	1.680	1.860	8	7.00
NESS10	2.140	2.335	10	9.50
NESS12	2.555	2.820	12	11.00



Platform Stepladders

NESP5 pictured

CODE	Open Height (m)	Platform Height (m)	Closed Height (m)	Treads	Weight (kg)
NESP3	1.220	0.580	1.360	3	5.00
NESP4	1.435	0.800	1.600	4	6.00
NESP5	1.665	1.025	1.840	5	7.00
NESP6	1.870	1.240	2.080	6	8.00
NESP7	2.090	1.450	2.320	7	9.00
NESP8	2.315	1.675	2.560	8	10.00
NESP10	2.725	2.120	3.010	10	12.50
NESP12	3.180	2.575	3.510	12	14.50



* All stepladders are available with hand rails, please call for more details



- Non conductive to 30,000 volts and so the ladder is ideal for use where electrical hazards exist
- Exceptional integral tool tray for equipment when in use.
- All treads are double riveted to provide extra strength for the user
- Maximum capacity load of 150kg



Trade Glassfibre Swingback Stepladder

CODE	Open Height (m)	Closed Height (m)	Treads	Weight (kg)
NGFHS4	1.16	1.26	4	6
NGFHS5	1.44	1.56	5	8
NGFHS6	1.72	1.86	6	10
NGFHS8	2.29	2.46	8	12

NGFHS8 pictured



For all sales enquiries please call: **01792 796666**

Heavy Duty Glassfibre Stepladders

Stepladders



This range of ladders is ideal for trade use and is tested to a durability test of 50,000 cycles.

- Tested & certified to New EN131-2, Professional
- Improved stiles and strengthened treads as well as reinforced platform inline with the new standard requirements
- Unique strengthening beam incorporated into non-slip treads, rubber feet, and twists as there are no tapes to snap, or flimsy arms to break
- Rigid box section back legs with additional cross braces and 'k' straps for increased strength and stability
- Non conductive to 30,000 volts and so the ladder is ideal for use where electrical hazards exist
- Lower bottom tread to avoid bending of front feet
- Plastic tool tray to hold tools and equipment while working
- British Made
- Maximum capacity load of 150kg



Heavy Duty Glassfibre Swingback Stepladders

CODE	Open Height (m)	Closed Height (m)	Treads	Weight (kg)
NGFBB4	0.775	0.865	4	4.00
NGFBB5	0.990	1.150	5	5.00
NGFBB6	1.215	1.345	6	6.00
NGFBB7	1.435	1.585	7	7.00
NGFBB8	1.665	1.830	8	7.50
NGFBB10	2.105	2.305	10	12.00
NGFBB12	2.540	2.610	12	15.00

NGFBB7 pictured



Heavy Duty Glassfibre Platform Stepladders

CODE	Overall Open Height (m)	Platform Height (m)	Closed Height (m)	Treads inc. platform	Weight (kg)
NGFBP3	1.225	0.590	1.330	3	6.00
NGFBP4	1.445	0.820	1.570	4	7.00
NGFBP5	1.670	1.045	1.805	5	8.00
NGFBP6	1.890	1.270	2.045	6	9.50
NGFBP7	2.095	1.470	2.290	7	10.50
NGFBP8	2.380	1.680	2.525	8	10.50
NGFBP10	2.735	2.130	3.005	10	16.00
NGFBP12	3.165	2.555	3.480	12	19.00

NGFBP6 pictured



Stepladders with Handrails

Stepladders

Our glassfibre and aluminium stepladder range can include handrails for additional safety.



Aluminium Stepladders with Handrails



CODE	Overall Open Height (m)	Platform Height (m)	Closed Height (m)	Treads inc. platform	Weight (kg)
NESP3HR	1.22	0.58	1.35	3	4.90
NESP4HR	1.43	0.79	1.59	4	5.60
NESP5HR	1.66	1.02	1.83	5	6.50
NESP6HR	1.87	1.23	2.07	6	7.40
NESP7HR	2.09	1.45	2.31	7	8.20
NESP8HR	2.3	1.67	2.55	8	9.20
NESP10HR	2.73	2.12	3.01	10	11.40
NESP12HR	3.19	2.58	3.52	12	13.40

NESP6HR pictured



Heavy Duty Glassfibre Stepladders with Handrails



CODE	Overall Open Height (m)	Platform Height (m)	Closed Height (m)	Treads inc. platform	Weight (kg)
NGFBP3HR	1.23	0.59	1.33	3	6.20
NGFBP4HR	1.44	0.82	1.56	4	7.10
NGFBP5HR	1.67	1.04	1.8	5	8.20
NGFBP6HR	1.89	1.26	2.04	6	9.20
NGFBP7HR	2.1	1.48	2.27	7	10
NGFBP8HR	2.31	1.69	2.51	8	11.10
NGFBP10HR	2.73	2.11	3	10	14
NGFBP12HR	3.17	2.56	3.47	12	15.90

NGFBP4HR pictured



For all sales enquiries please call: **01792 796666**



Aluminium Widestep



EN131 Aluminium extra wide working platform.
Suitable for industrial work as well as trade use.

- Wide working platform of 400mm x 600mm
- Aluminium frame with aluminium treads
- Wheels at rear
- Safety chain for added security
- Lower bottom tread to avoid bending of front feet



CODE	Open Height (m)	Platform Height (m)	Closed Height (m)	Tread	Weight (kg)
NBSWP2	1.41	0.38	1.57	2	6
NBSWP3	1.62	0.61	1.78	3	8
NBSWP4	1.84	0.83	1.98	4	9
NBSWP5	2.05	1.05	2.22	5	10
NBSWP6	2.26	1.26	2.49	6	11
NBSWP7	2.47	1.48	2.73	7	12
NBSWP8	2.7	1.71	2.96	8	13



Glassfibre Widestep



EN131 Glassfibre extra wide working platform.
Suitable for industrial work as well as trade use.

- Wide working platform of 400mm x 600mm
- Non conductive to 30,000 volts and so the ladder is ideal for use where electrical hazards exist
- Wheels at rear
- Safety chain for added security



CODE	Open Height (m)	Platform Height (m)	Closed Height (m)	Tread	Weight (kg)
NGFWP2	1.41	0.38	1.57	2	8
NGFWP3	1.62	0.61	1.78	3	9
NGFWP4	1.84	0.83	1.98	4	11
NGFWP5	2.05	1.05	2.22	5	14
NGFWP6	2.26	1.26	2.49	6	16
NGFWP7	2.47	1.48	2.73	7	18
NGFWP8	2.7	1.71	2.96	8	20

OPTIONAL FEATURE: Ladder tag for inspection and maintenance

Lightweight Aluminium Stepladders

Stepladders



Strong, lightweight aluminium platform stepladder range.

- Slim design – ideal for storage and transport
- Rubberised feet provide slip resistance and floor protection
- Fitted with high tensile straps
- Maximum capacity load of 150kg



Professional EN131 Platform Stepladder Range

Code	Treads	Open Height	Closed Height	Platform Height (mm)	Open Depth (mm)	Weight (Kg's)
NENPL3	3	1.2	1.27	600	620	2.9
NENPL4	4	1.42	1.5	820	760	3.4
NENPL5	5	1.64	1.73	1040	910	4
NENPL6	6	1.86	1.97	1260	1050	4.8
NENPL8	8	2.3	2.44	1700	1340	6

NENPL4 pictured



For all sales enquiries please call: **01792 796666**

LYTE

LADDERS | TOWERS

THE NEW EN131 PROFESSIONAL STANDARD

What are the changes?

Old standards



DOMESTIC

BS 1129 Class 3 |
BS 2037 Class 3



TRADE/INDUSTRIAL EN131



INDUSTRIAL

BS 1129 Class 1 |
BS 2037 Class 1



New standards



Non-Professional

For domestic
users only



Professional

Intended for use
in a workplace

Make sure all your products are tested and certified to the latest standards. Contact us for more details on the new EN131 standard and how it affects you and your customers.

EXTENSION LADDERS



Domestic DIY Extension Ladders	16
General Trade Extension Ladders	17
Professional Trade Extension Ladders	18
Industrial Extension Ladders	19
Professional Industrial Extension Ladders	20
Aluminium Single Section Ladders	21
Heavy Duty Industrial Extension Ladders	22

Domestic DIY Extension Ladders

Extension
Ladders



Designed, tested and manufactured to the new EN131-2 standard, our traditional BD range has been redesigned to ensure it meets and exceeds the new standard requirements. Made in the UK, built from the best quality aluminium and certified to EN131-2 Non-Professional for less frequent and demanding work. Available in 2 and 3 sections and now comes with a high quality stabiliser bar for maximum safety and stability.

- Tested & certified to New EN131-2, Non-Professional
- Manufactured with D shaped rung for comfort when climbing
- Newly designed stabiliser bar which is easy to fit and reduces the risk of sideways slips and gives a larger and safer footprint
- Improved box section stiles and strengthened rungs inline with the new standard requirements
- British Made
- Maximum capacity load of 150kg
- Available in 2 & 3 sections



Two Section Push Up

CODE	Open Height (m)	Closed Height (m)	Rungs	Width (m)		Depth (mm)	Weight (kg)	Sections
				without stabiliser	with stabiliser			
NBD225	3.3	2.2	7	0.4	0.8	105	8.5	2
NBD230	4.4	2.7	9	0.4	0.9	105	10.5	2
NBD235	5.5	3.2	11	0.4	1	105	13.5	2
NBD240	6.6	3.8	13	0.4	1.1	125	18	2
NBD245	7.8	4.4	15	0.4	1.2	145	22	2

LYTE
LADDERS | TOWERS



Three Section Push Up

CODE	Open Height (m)	Closed Height (m)	Rungs	Width (m)		Depth (mm)	Weight (kg)	Sections
				without stabiliser	with stabiliser			
NBD325	4.4	2.2	7	0.4	1	155	13.5	3
NBD330	6.1	2.7	9	0.4	1.2	185	20.5	3
NBD335	7.8	3.3	11	0.4	1.2	210	26	3



General Trade Extension Ladders

Extension
Ladders



Our new lightweight General Trade extension ladders are designed, tested and certified to EN131-2 Standard Ideal for frequent general trade use, available in 2 & 3 sections.

- Manufactured in the UK from the best quality aluminium
- Supplied with a high-quality stabiliser bar for maximum safety and stability
- Improved box section stiles and comfortable climbing D shaped rungs
- Available in 2 & 3 sections
- Maximum capacity load of 150kg



Two Section General Trade Push Up

CODE	Rungs	Closed Height	Open Height	Width (mm)	Open Depth (mm)	Weight (kg)
NGLT225	7	2.2	3.34	800	105	8.7
NGLT230	9	2.7	4.41	900	105	10.4
NGLT235	11	3.3	5.58	1000	140	13
NGLT240	13	3.8	6.66	1100	140	17
NGLT245	15	4.4	7.8	1200	155	20.2

NGLT235 pictured



Three Section General Trade Push Up

CODE	Rungs	Closed Height	Open Height	Width (mm)	Open Depth (mm)	Weight (kg)
NGLT325	7	2.2	4.46	1000	175	13
NGLT330	9	2.7	6.13	1100	175	19.5
NGLT335	11	3.3	7.8	1200	185	25



For all sales enquiries please call: **01792 796666**

Professional Trade Extension Ladders

Extension
Ladders



Our popular trade extension ladder has now been re-designed, tested and manufactured to the

new EN131-2 standard to ensure it meets and exceeds the new standard. Made in the UK and built from the best quality aluminium and certified to EN131-2 Professional for frequent and heavy duty work. Available in 2 and 3 sections and now comes with a high quality stabiliser bar for maximum safety and stability.

- Tested & certified to New EN131-2, Professional
- Manufactured with D shaped rung for comfort when climbing
- Newly designed stabiliser bar which is easy to fit and reduces the risk of sideways slips and gives a larger and safer footprint
- Improved box section stiles and strengthened rungs inline with the new standard requirements
- British Made
- Maximum capacity load of 150kg
- Available in 2 & 3 sections



Two Section Push Up

CODE	Open Height (m)	Closed Height (m)	Rungs	Width (mm)		Depth (mm)	Weight (kg)	Sections
				without stabiliser	with stabiliser			
NELT225	3.85	2.45	8	400	800	105	10	2
NELT230	4.90	2.93	10	400	900	105	12.5	2
NELT235	5.97	3.45	12	400	1000	140	17	2
NELT240	7.14	4.04	14	400	1200	140	18.5	2
NELT245	7.81	4.45	15	400	1200	155	22	2
NELT250	8.88	4.95	17	400	1200	155	24.5	2



Three Section Push Up

CODE	Open Height (m)	Closed Height (m)	Rungs	Width (mm)		Depth (mm)	Weight (kg)	Sections
				without stabiliser	with stabiliser			
NELT325	5.23	2.45	8	475	900	195	18.5	3
NELT330	6.92	2.93	10	475	1200	195	23	3
NELT335	8.48	3.45	12	475	1200	210	27	3
NELT340	10.2	4.04	14	475	N/A	215	31	3



Industrial Extension Ladders

Extension
Ladders



- For frequent heavy duty use, the LYTE Industrial Extension Ladder is certified to 131-2 Standard
- Manufactured in the UK with the best quality aluminium
- Available in 2 & 3 sections with a high quality stabiliser bar for maximum safety and stability
- Maximum load capacity of 150kg



Industrial Two Section Push Up

CODE	Open Height (m)	Closed Height (m)	Rungs	Width (mm)	Open Depth (mm)	Weight (kg)
NGB225	3.84	2.42	8	900	110	10.2
NGB230	4.88	2.92	10	1000	110	12
NGB235	5.94	3.42	12	1100	110	15.6
NGB240	7.03	4.04	14	1200	110	18.2
NGB245	7.81	4.42	15	1200	140	21.4
NGB250	8.83	4.92	17	1200	140	23.6

NGB235 pictured



Industrial Three Section Push Up

CODE	Open Height (m)	Closed Height (m)	Rungs	Width (mm)	Open Depth (mm)	Weight (kg)
NGB325	5.22	2.42	8	900	110	17.4
NGB330	6.85	2.92	10	1200	110	21.5
NGB335	8.46	3.42	12	1200	110	26.5
NGB340	9.66	4.04	14	1200	140	31



For all sales enquiries please call: **01792 796666**

Professional Industrial Extension Ladders

Extension
Ladders



The Lyte
industrial
extension

ladder has been re designed, tested and manufactured to the new EN131-2 standard to ensure it meets and exceeds the new standard. Made in the UK and built from the best quality aluminium and certified to EN131-2 Professional for regular industrial work. Available in single, double and triple sections and now comes with a high quality stabiliser bar for maximum safety and stability.

- Tested & certified to New EN131-2, Professional
- Manufactured with D shaped rung for comfort when climbing
- Newly designed stabiliser bar which is easy to fit and reduces the risk of sideways slips and gives a larger and safer footprint
- Improved box section stiles and strengthened rungs inline with the new standard requirements
- British Made
- Maximum capacity load of 150kg
- Available in single, double and triple sections



Single Section General Duty Ladders

CODE	Open Height (m)	Closed Height (m)	Rungs	Width (mm)		Depth (mm)	Weight (kg)	Sections
				without stabiliser	with stabiliser			
NGS120	1.93	1.93	7	375	N/A	64	4.5	1
NGS125	2.43	2.43	9	375	N/A	64	5.4	1
NGS130	2.93	2.93	11	375	N/A	64	6.5	1
NGS135	3.43	3.43	13	375	800	64	8.8	1
NGS140	3.95	3.95	15	375	900	64	10	1
NGS145	4.45	4.45	17	375	900	64	10.5	1
NGS150	4.95	4.95	19	375	1000	64	12	1
NGS160	5.95	5.95	23	375	1100	64	14.5	1



Two Section Push-up General Duty Extension Ladders

CODE	Open Height (m)	Closed Height (m)	Rungs	Width (mm)		Depth (mm)	Weight (kg)	Sections
				without stabiliser	with stabiliser			
NGD220	2.93	1.93	7	430	N/A	110	9	2
NGD225	3.7	2.43	9	430	900	110	13	2
NGD230	4.95	2.96	11	430	1000	110	14.5	2
NGD235	5.98	3.45	13	430	1100	110	15.5	2
NGD240	6.99	3.93	15	435	1200	110	22.8	2
NGD245	8.2	4.43	17	435	1200	140	26.2	2
NGD250	8.95	4.93	19	435	1200	140	28.2	2



Three Section Push-up General Duty Extension Ladders

CODE	Open Height (m)	Closed Height (m)	Rungs	Width (mm)		Depth (mm)	Weight (kg)	Sections
				without stabiliser	with stabiliser			
NGT320	3.71	1.94	7	510	1000	110	15	3
NGT325	5.46	2.45	9	510	1100	110	19	3
NGT330	6.95	2.96	11	510	1200	110	27.5	3
NGT335	8.45	3.45	13	510	1200	140	31	3
NGT340	9.95	3.95	15	510	1200	140	41.5	3



Aluminium Single Section Ladders

Extension
Ladders



Single section ladders built from the best quality aluminium to be lightweight, durable and reliable Ideal for general use.

- Sizes over 3m supplied with a high-quality stabiliser bar for maximum safety and stability
- Improved box section stiles and rifled rung pitch of 260mm for maximum safety
- Maximum capacity load of 150kg

CODE	Open Height	Closed Height	Rungs	Base Width	Top Width	Depth	Product Weight (Kg's)
NS120	1.85	1.85	7	345	345	55	2.50
NS125	2.37	2.37	9	345	345	55	3.30
NS130	2.89	2.89	11	345	345	65	4.40
NS135	3.45	3.45	13	754	345	70	5.80
NS140	3.97	3.97	15	804	345	70	6.60
NS145	4.49	4.49	17	854	345	80	8.00
NS150	5.01	5.01	19	904	345	80	8.90

NS120 pictured left & NS145 right

LYTE
LADDERS | TOWERS



Heavy Duty Industrial Extension Ladders

Extension
Ladders



The Lyte Heavy Duty extension ladder has been re designed, tested

and manufactured to the new EN131-2 standard to ensure it meets and exceeds the new standard. Made in the UK and built from the best quality aluminium and certified to EN131-2 Professional for regular industrial work. Available in 2 and 3 sections and now comes with a high quality stabiliser bar for maximum safety and stability.

- Tested & certified to New EN131-2, Professional
- Manufactured with D shaped rung for comfort when climbing
- Newly designed stabiliser bar which is easy to fit and reduces the risk of sideways slips and gives a larger and safer footprint
- Improved box section stiles and strengthened rungs inline with the new standard requirements
- British Made
- Maximum capacity load of 150kg
- Available in double and triple sections



HD - Two Section Heavy Duty Rope-operated Extension Ladders

CODE	Closed Height (m)	Ext. Height (m)	Rungs	Weight (kg)
NHD235	3.37	5.75	13	20.00
NHD240	3.94	7.01	15	23.10
NHD245	4.44	8.01	17	26.80
NHD250	4.94	8.76	19	29.90
NHD255	5.44	9.76	21	37.20
NHD260	5.94	10.51	23	45.40
NHD270*	6.94	12.51	27	50.40



*Not Kitemarked



HT - Three Section Heavy Duty Rope-operated Extension Ladders

CODE	Closed Height (m)	Ext. Height (m)	Rungs	Weight (kg)
NHT340	4.44	9.97	15	43.50
NHT345	4.94	11.5	17	52.60
NHT350	5.44	12.5	19	58.50
NHT355*	5.94	13.5	21	64.90
NHT360*	6.44	14.94	23	71.20



*Not Kitemarked

ROOF LADDERS

LYTE

LADDERS | TOWERS





Superior quality trade roof ladder manufactured in the UK from high grade aluminium to ensure strength and stability. Adopted by many blue chip companies throughout the UK and beyond.

- Heavy duty ridge hook for stability when placed on the roof
- Industrial non-slip rungs and box section stiles
- Rubber bearer bars to help distribute weight evenly and help prevent damage to the roof
- Available in single and double sections
- Double section fitted with locking safety catch

LYTE
LADDERS | TOWERS



Single Section

CODE	Closed Length (m)	Overall Length (m)	Rungs	Weight (kg)
TRL130	-	2.95	11	8.50
TRL135	-	3.45	13	10.00
TRL140	-	3.95	15	11.00
TRL145	-	4.50	17	11.50
TRL150	-	4.97	19	12.00
TRL155	-	5.46	21	13.50

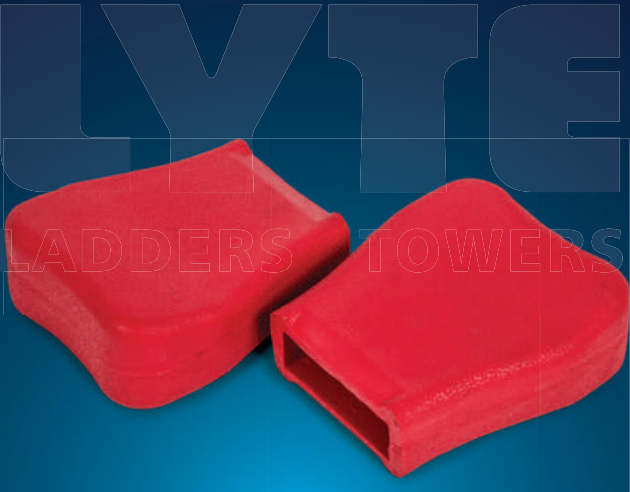


Double Section Extension

CODE	Closed Length (m)	Overall Length (m)	Rungs	Weight (kg)
TRL230	2.94	4.64	11+9	14.00
TRL235	3.44	5.64	13+11	16.00
TRL240	3.94	6.64	15+13	18.00
TRL245	4.30	7.67	17+15	20.00



LADDER ACCESSORIES AND SPARES



Ladder Stay	26
Articulated Ladder Feet	26
Universal Roof Hook	26
Ladder Pads	26
Step Ladder Feet	26
Ladder Feet	26
Wall Running Wheels	27
Ladder Mat	27
Lyte Ladder Tags	27
Rope Kit	27
Ridge Hook	27



Ladder Stay



Rack Clamps



Articulated Ladder Feet



Ladder Pads



Ladder Feet

Ladder Stay

Not only does this device increase the width of the extension ladder reducing the risk of ladder twist/slip, also prevents damage to guttering. Also available in a versatile V shape which also allows the device to be used around corners of buildings.

CODE: LLS & LLSV

Articulated Ladder Feet

Lyte non-slip articulated feet are ideal for increased safety in most situations- indoors and out. Designed to fit nearly all ladders.

CODE: C1006A

Universal Roof Hook

Designed to turn any ladder into a roof ladder. Aluminium hook and wheels and it's easily attached.

CODE: ARH

Rack Clamps

Easy to use clamps designed to lock ladders and steps securely in place whilst on a roof rack. Available with or without padlocks.

CODE: C1443A

Ladder Pads

The essential accessory for decorators, shop fitters, window installer, window cleaners and the DIY user to avoid marking property.

- Universal fit.
- Improves safety.
- Prevents marking.
- Prevents surface damage.
- Resists paints, stains, thinners and solvents.
- Reversible design.

CODE: LADDERPADS

Step Ladder Feet

Solid moulded rubber feet designed to ensure ultimate grip on a variety of floor surfaces

Ladder Feet

PVC moulded feet give all round secure footing to the whole ladder range.

LYTE
LADDERS | TOWERS

Ladder Accessories & Spares

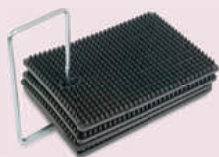
Ladder
Accessories
& Spares



Wall Running Wheel



Ladder Tags



Ladder Mat



Ridge Hook



Ridge Hook

Wall Running Wheels

Replacement heavy duty solid rubber wheels complete with fixings to be attached.

Ladder Mat

Four mats made from heavy duty rubber matting with modules, are linked by a sturdy metal loop and offer adjustable anti slip blocking to go under the ladder needing extra height. Also can be put under both feet to reduce risk of slipping or sinking into soft ground.

Each mat 24 x 17cm (9" x 6.5").
Maximum extra height 6.5cm (2.5").

CODE: LADDERMAT

Ladder Tags

The best safety tagging system for ladders, steps and podium steps. The Tag Insert records unique ID code of product, plus dates of safety inspections & date of next check. All this is required by the latest Work at Height regulations. The Tag holder can be riveted or cable-tied to the ladder. The pack consists of a holder plus an insert.

CODE: LYTETAG & LYTETAGINSERT

Rope Kit

Replacement nylon rope kit for heavy duty extension ladders. When ordering the size of the ladder needs to be stated.

Ridge Hook

Replacement hook for trade and industrial roof ladders.

CODE: RHW

LYTE
LADDERS | TOWERS

MULTI-PURPOSE LADDERS



Lyte Professional Combination Ladders	29
Combination Ladders	30
Lyte 3 Way Ladder	31
Telescopic Ladders	32
Multi-Purpose Ladders	33

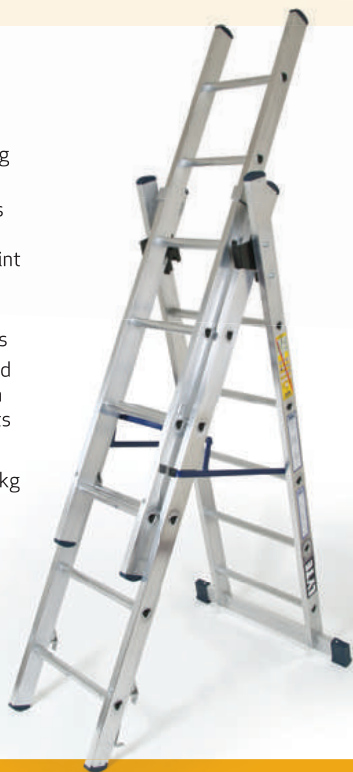
Lyte Professional Combination Ladders

Multi-Purpose
Ladders



Our popular trade combination ladder has now been re designed, tested and manufactured to the new EN131-2 standard to ensure it meets and exceeds the new standard. Made in the UK and built from the best quality aluminium and certified to EN131-2 Professional for frequent and heavy trade work. Available in 3 sections with either 6, 9, or 12 rungs per section. The 6 & 9 are able to be used on stairs.

- Tested & certified to New EN131-2, Professional
- Manufactured with D shaped rung for comfort when climbing
- Newly designed stabiliser bar which is easy to fit and reduces the risk of sideways slips and gives a larger and safer footprint
- This range of ladders is ideal for trade use and is tested to a durability test of 50,000 cycles
- Improved box section stiles and strengthened rungs inline with the new standard requirements
- British Made
- Maximum capacity load of 150kg



Lyte Professional Combination Ladder

CODE	Rungs per section	Closed height (m)	'A' frame height (m)	Extended step height (m)	Extension Ladder Length (m)	Product Weight (kg)
LCL6	6	1.86	1.78	2.83	4.1	14.4
LCL9	9	2.69	2.57	4.15	6.1	20.3
*LCL12	12	3.54	3.36	5.55	8.4	25.2

*LCL12 comes with nylon strap. **Please note:** LCL12 cannot be used on stairs.



For all sales enquiries please call: **01792 796666**

Combination Ladders

Multi-Purpose
Ladders

A versatile combination ladder, ideal for the professional tradesman. Certified to EN131.

- Combines a stepladder and extension ladder in one product
- Unique sliding mechanism for easy conversion to all three ways
- Wide base and heavy duty feet for stability and grip. Stabilisers fitted for extra stability
- Non slip treads for comfort and security
- Suitable for a wide variety of uses, can be used for all trade work



Aluminium Combination Ladder



LYTE
LADDERS | TOWERS

Code	Closed Length (m)	Extended stepladder height (m)	Extension Ladder Length (m)	Product Weight (kg)
NCL6	1.71	2.43	3.39	9.15

Lyte 3 Way Ladder

Multi-Purpose
Ladders



- Sturdy locking hooks made from galvanized steel
- Secure locking mechanism to provide extra safety
- Stabiliser bar and secure locking hinge for added support
- Sturdy box section stiles
- Multi purpose product that can be used as a step ladder, extension ladder or for use on stairs



**Lyte 3 Way
Ladder**

Code	Closed Length (m)	Stepladder Height (m)	Extension Ladder height (m)	Stairway Step Ladder (m)	Product Weight (kg)
L3W	1.78	1.68	2.59	1.5	5.8



For all sales enquiries please call: **01792 796666**

Telescopic Ladders

Multi-Purpose
Ladders



- Adjustable, telescopic sections and simple 'Click-Lock' hinge system
- Can be used as a stepladder, stairwell ladder and extension ladder
- Compact folded dimensions, very easy to use, transport and store
- Non-slip feet and splayed base for extra stability
- Suitable for professional and domestic use



Telescopic Ladder System

CODE	Sections x rungs	Stepladder Height (m)	Extension Ladder Height (m)	Product Weight (kg)
NTLS4X4	4X4	1.3 - 2.17	2.66 - 4.43	13.7

Multi-Purpose Ladders

Multi-Purpose
Ladders



Aluminium Multi-Purpose Ladder



- Stabilisers for extra footprint and stability
- Simple click lock hinge system
- Suitable for a wide variety of trade and domestic use
- Non-slip feet
- Removable platform on 4x3 version only
- Can be used as an 'A' frame ladder, extended ladder and step ladder



CODE	Stepladder Height (m)	Platform Height (m)	Extension Ladder (m)	Weight (kg)
NMPL4X4	2.27	N/A	4.68	15.55



Glassfibre Multi-Purpose Ladder



- Stabilisers for extra footprint and stability
- Suitable for use where electrical hazards may exist as it is tested to 30,000 volts
- Simple click lock hinge system
- Suitable for a wide variety of trade and domestic use
- Non-slip feet
- Removable platform on 4x3 version only
- 4 sections with 3 rungs per section
- Can be used as an 'A' frame ladder, extended ladder and step ladder



CODE	Stepladder Height (m)	Extension Ladder (m)	Weight (kg)
NGFMPL4X3	1.75	3.56	15.3



For all sales enquiries please call: **01792 796666**

WAREHOUSE & FACILITIES ACCESS



Fixed Industrial Steps

35-36

Aluminium Warehouse Steps

37

Fixed Industrial Steps

Warehouse
& Facilities
Access



Heavy duty product for use in trade and industrial environments.



Fixed Industrial Steps

- Non-slip treads and a large non-slip platform
- Available as a single sided step with options for handrails and handposts



CODE	Height to Platform (m)	Rungs	Weight (kg)
L3	0.73	3	6.50
L4	0.98	4	8.00
L5	1.22	5	9.00



For all sales enquiries please call: **01792 796666**

Fixed Industrial Steps

Warehouse
& Facilities
Access



Fixed Industrial Steps – Double Sided



- Non-slip treads and a large non-slip platform
- Available as a double sided step with options for handrails and handposts

Available with handrails if required, please call for details

CODE	Height to Platform (m)	Rungs	Weight (kg)
LD3	0.73	3	7.50
LD4	0.98	4	9.00
LD5	1.22	5	11.00



Aluminium Warehouse Steps

Warehouse
& Facilities
Access



Aluminium Warehouse Steps



Heavy duty product for use in trade and industrial environments.

- Back and side rails provide a safe working platform
- Handrails fitted providing additional safety when in use
- Sizes 8 to 14 tread is supplied as a flatpack



CODE	Open Height to Platform (m)	Rungs	Weight (kg)
WS4	1.00	4	9.90
WS5	1.22	5	11.30
WS6	1.46	6	12.70
WS7	1.71	7	14.50
WS8	1.95	8	15.90
WS10	2.44	10	20.00
WS12	2.93	12	23.60
WS14	3.42	14	26.80



For all sales enquiries please call: **01792 796666**

SPECIALIST LADDERS



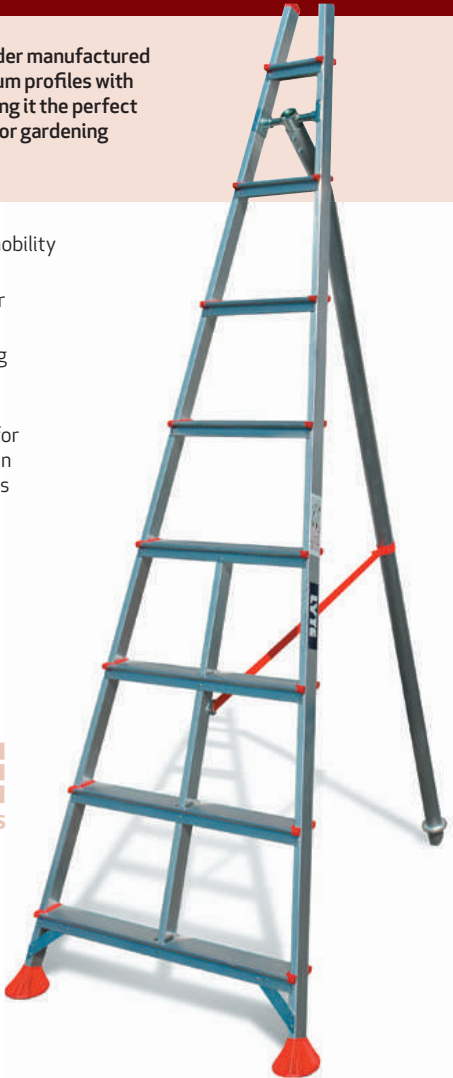


Fruit Picking Tripod

Industrial strength ladder manufactured from extruded aluminium profiles with reinforced design making it the perfect purpose built product for gardening and agricultural work.

- Lightweight for easy mobility yet strong and durable
- Rifled 80mm treads for maximum safety
- Steel reinforced folding mechanism allows for compact storage
- Heavy duty rear spike for secure positioning when working close to hedges & shrubbery
- Anti slip splayed feet with large surface area for maximum secure positioning
- Maximum capacity load of 150kg

LYTE
LADDERS | TOWERS



Code	Treads	Closed Height	Open height	Open width	Open depth	Weight (kg)
FPT2	7	2.31	2.15	0.8	1.42	7.2
FPT3	10	3.26	3.06	1.05	2.02	10.9
FPT5	14	4.54	4.26	1.39	2.81	16.5

LOFT LADDERS





LYTE EASILOFT 2 and 3 Section Loft Ladders



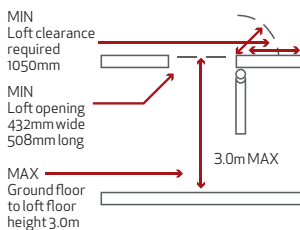
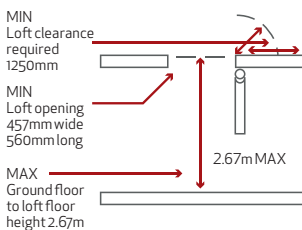
- Easy to install
- Certified to BSEN14975-2006
- Spring loaded catches for extra security when stored or in use
- Non-slip rubber feet
- Handrail included for safety access and egress
- Max load 150kg



Easiloft LEL2



Easiloft LEL3



CODE	Sections	Max. Floor to Floor	Min. Loft Clearance	Min. Loft Opening
LEL2	2	2.67m	1.25m	457 x 560mm
LEL3	3	3m	1.05m	432 x 508mm



LOW LEVEL ACCESS



Work Platforms

43

LytePod Podium Steps

44-45

- Locking hinges for added safety when in use and when stored
- Non slip platform
- Compact folded dimensions
- Lightweight
- Tested to EN131
- Maximum load capacity of 150kg



Low Level Work Platforms



CODE	Platform Width (mm)	Platform Length (mm)	Platform Height (mm)	Weight (kg)
WPS2	300	1000	480	5.60

LYTE
LADDERS | TOWERS



For all sales enquiries please call: **01792 796666**

LytePod Podium Steps

Low Level
Access



- Certified to BS8620
- Saloon gates for easy access and egress, stoppers for extra safety
- Only 2 removeable parts: platform deck and access ladder
- All models have 2 platform heights
- Anti-surf as standard
- Compact folding dimensions
- Non-removeable stabilisers



Only two
removable parts



Compact folding
dimensions



All models have
two platform
heights



Saloon gates for
easy access and
egress

LytePod Podium Steps

Low Level
Access



Lyte
Podium Steps

CODE	Platform Height (mm)	Overall Height (mm)	Width (mm)	Weight (kg)
LP10 (1M)	725 or 975	2010	670	37
LP12 (1.2M)	975 or 1225	2260	670	40
LP15 (1.5M)	1225 or 1475	2510	670	43



For all sales enquiries please call: **01792 796666**

LYTE

LADDERS | TOWERS

THE NEW EN131 PROFESSIONAL STANDARD

What are the changes?

Old standards



DOMESTIC

BS 1129 Class 3 |
BS 2037 Class 3



TRADE/INDUSTRIAL EN131



INDUSTRIAL BS 1129 Class 1 | BS 2037 Class 1



New standards



Non-Professional

For domestic
users only



Professional

Intended for use
in a workplace

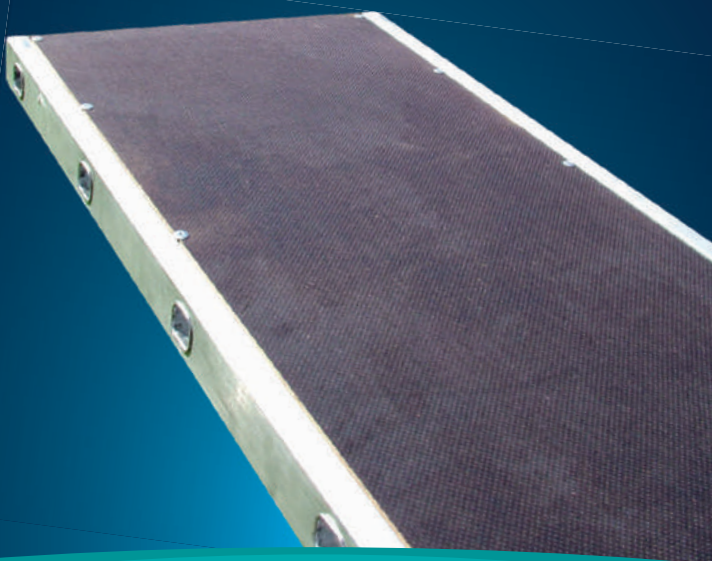
Make sure all your products are tested and certified to the latest standards. Contact us for more details on the new EN131 standard and how it affects you and your customers.



STAGING BOARDS, POSTS & HANDRAILS

LYTE

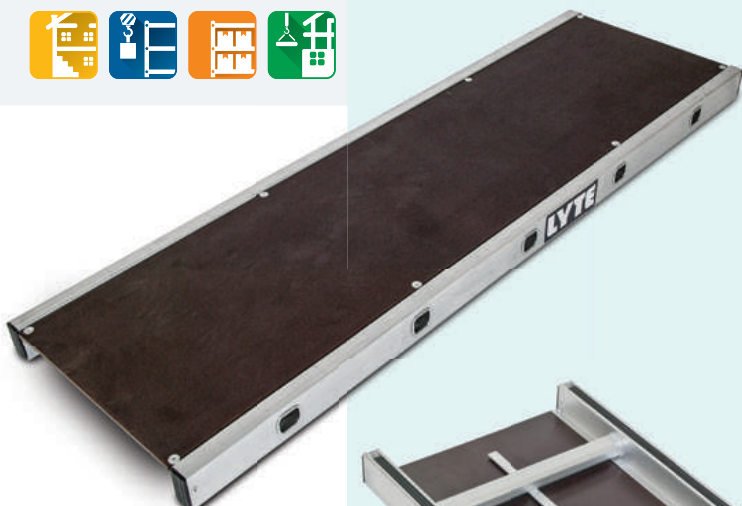
LADDERS | TOWERS



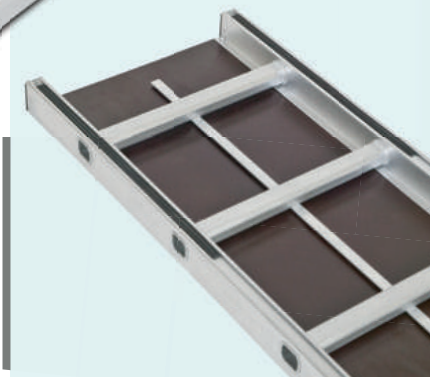
Stagings	48
Staging Board Posts & Handrails	49



Lightweight Staging Boards – Standard and Extra Wide



- Manufactured to BS2037
- Can be used in conjunction with handrail systems.
- Non-slip, rot-proof decking
- Rubber end caps
- 'K' straps fitted to end struts
- Rubber inserts for additional grip



VPRO Range

Class 1 BS2037 lightweight staging boards, trade and industrial use.

CODE	Width (mm)	Length (m)	Weight (kg)
VPRO24	450	2.40	13.00
VPRO30	450	3.00	15.30
VPRO36	450	3.60	19.50
VPRO42	450	4.20	22.00
VPRO48	450	4.80	23.50
VPRO54	450	5.40	33.00
VPRO60	450	6.00	36.00
VPRO66	450	6.60	44.00
VPRO72	450	7.20	47.00

VPROEX Range

Extra Wide Class 1 BS2037 lightweight staging boards, trade and industrial use.

CODE	Width (mm)	Length (m)	Weight (kg)
VPROEX24	600	2.40	17.40
VPROEX30	600	3.00	20.50
VPROEX36	600	3.60	26.20
VPROEX42	600	4.20	29.50
VPROEX48	600	4.80	31.50
VPROEX54	600	5.40	44.50
VPROEX60	600	6.00	48.50
VPROEX66	600	6.60	59.30
VPROEX72	600	7.20	63.40



Staging Board Posts & Handrails

Staging
Boards, Posts
& Handrails



**Standard
board
staging
posts**

CODE VHPOST

**Extra wide
board
staging
posts**

CODE VHPOSTX

Handrail

CODE HANDRAIL

Industrial handrail systems are available, please call for details

TOWERS



GRP Lift	51
Lift System	52-53
Hilyte Leader GRP	54-55
Hilyte 500	56-57
Hilyte 250	58-59
Stairlyte Tower	60



Hilyte GRP Folding Tower System



- Complies with EN1004:2004
- Patented Fail Safe Joint system
- Non-conductive/Sparking/Corroding/Oxidising
- Impact resistant brace claws
- Easily identifiable braces for ease of assembly
- Suitable for use in challenging areas or any zone 1 environment
- Integral ladder system
 - Platform deck edge protection is made up of GRP profile
 - Available at two platform heights of 1.2m and 2.2m
 - Available at a length of 1.4m and width of 740mm



CODE	Description	Quantity 1.1m	Quantity 2.1m
GDLC	150mm Dual Locking Castors	4	4
GFTBU	Folding Tower Base Unit	1	1
G2RGRF	Guardrail Frame	0	2
GHD14	1.4m GRP Hatch Deck	1	1
GHB14	1.4m GRP Horizontal Brace	4	5
GDB21	2.1m GRP Diagonal Brace	0	1
GTBL18/ALU/SW	Folding Toeboard	1	1
GPSU	Standard Stabiliser Unit	0	4



For all sales enquiries please call: **01792 796666**



Lyte Industrial Folding Tower System – LIFT



- Base can be used alone or increased using extra components to achieve 7 additional heights
- Tested and certified to BSEN1004:2004
- Fits easily into most small vans or estate cars
- Quick and easy to erect – saving time on each job
- Narrow tower width – compact & easy storage
- Quick release pull rings with stainless steel pin on all bracings for easy assembly
- Smooth & ribbed texture on braces for quick identification
- 3T compatible

Please remember – a thorough risk assessment must be carried out prior to any work being undertaken at height



Platform Height (Max)	0.6m	1.6m	2.1m	3.1m	3.6m	4.6m	5.1m	6.1m
125mm Dual Locking Castors	4	4	4	4	4	4	4	4
Folding Tower Base Unit	1	1	1	1	1	1	1	1
1.0m Additional Frame	0	2	0	2	0	2	2	0
1.5m Additional Frame	0	0	2	2	4	4	2	2
2.0m Additional Frame	0	0	0	0	0	0	2	4
1.8m Additional Hatch Deck	1	1	1	2	2	2	2	3
1.8m Horizontal Brace	4	5	5	9	9	9	9	13
2.1m Diagonal Brace	0	1	2	3	3	4	5	6
1.8m Toe board Length	0	2	2	2	2	2	2	2
Toe board End Single Width	0	2	2	2	2	2	2	2
Standard Stabiliser Unit	0	0	4	4	4	0	0	0
Telescopic Stabiliser Unit	0	0	0	0	0	4	4	4



SKUFFS

100mm high x 250mm wide

SKUFFS have been introduced to the Lyte Tower accessory range in order to help protect fixtures and fittings during construction maintenance work.

SKUFFS are compatible with a range of equipment including low-level access such as podiums etc., aluminium towers, mobile elevated platforms and system scaffold.

SKUFFS are manufactured from a fire retardant foam designed to absorb the force of impact and can be designed for bespoke applications.

SKUFFS are easy to fit and are incredibly cost effective.



For all sales enquiries please call: **01792 796666**



The New Leader in GRP



- Patented fail safe joint system
- Non-conductive/sparking
- Non-corroding
- Non-oxidising
- Tested to EN1004:2004
- Integral ladder system
- Available in 1.8m and 2.5m*
- 2 widths available 0.85m & 1.45m (single & double width)
- Suitable for use in challenging areas or any zone 1 environment
- Easily identifiable braces for ease of assembly
- Impact resistant brace claws
- Maximum safe working platform load of 200kg (double width 400kg)
- Platform deck edge protection is made up of GRP profile

2.5m available,
please ask for details



Hilyte GRP 500 Tower Single Width Component Schedule

Component Schedule based on 3T specification

3T	2.2	2.7	3.2	3.7	4.2	4.7	5.2	5.7	6.2	6.7	7.2	7.7	8.2	8.7	9.2	9.7	10.2	10.7	11.2	11.7	12.2
Single Width - Platform Heights																					
Dual Locking Castors	4	4	4	4	4	4	4	4	4	4	4	4	4	4	4	4	4	4	4	4	4
Adjustable Leg Unit	4	4	4	4	4	4	4	4	4	4	4	4	4	4	4	4	4	4	4	4	4
2 Rung Single Width Guardrail Frame	1	-	-	1	1	-	-	1	1	-	-	1	1	-	-	1	1	-	-	1	1
2 Rung Single Width Ladder Frame	1	-	-	1	1	-	-	1	1	-	-	1	1	-	-	1	1	-	-	1	1
3 Rung Single Width Ladder Frame	-	1	-	1	-	1	-	1	-	1	-	1	-	1	-	1	-	1	-	1	-
3 Rung Single Width Span Frame	-	1	-	1	-	1	-	1	-	1	-	1	-	1	-	1	-	1	-	1	-
4 Rung Single Width Ladder Frame	1	1	2	1	2	2	3	2	3	3	4	3	4	4	5	4	5	5	6	5	6
4 Rung Single Width Span Frame	1	1	2	1	2	2	3	2	3	3	4	3	4	4	5	4	5	5	6	5	6
1.8m Hatch Deck	1	2	2	2	2	3	3	3	3	4	4	4	4	5	5	5	5	6	6	6	6
1.8m Horizontal Brace	6	6	10	10	10	14	14	14	14	18	18	18	18	22	22	22	22	26	26	26	26
2.1m Diagonal Brace	3	5	5	7	7	9	9	11	11	13	13	15	15	17	17	19	19	21	21	23	23
1.8m Toeboard Folding	1	1	1	1	1	1	1	1	1	1	1	1	1	1	1	1	1	1	1	1	1
Standard Stabiliser Unit	4	4	4	4	4	4	4	4	-	-	-	-	-	-	-	-	-	-	-	-	-
Large Stabiliser Unit	-	-	-	-	-	-	-	-	4	4	4	4	4	4	4	4	4	4	4	4	4

Hilyte GRP 500 Tower Double Width Component Schedule

Component Schedule based on 3T specification

3T	2.2	2.7	3.2	3.7	4.2	4.7	5.2	5.7	6.2	6.7	7.2	7.7	8.2	8.7	9.2	9.7	10.2	10.7	11.2	11.7	12.2
Double Width - Platform Heights																					
Dual Locking Castors	4	4	4	4	4	4	4	4	4	4	4	4	4	4	4	4	4	4	4	4	4
Adjustable Leg Unit	4	4	4	4	4	4	4	4	4	4	4	4	4	4	4	4	4	4	4	4	4
2 Rung Double Width Ladder Frame Guardrail Frame	1	-	-	1	1	-	-	1	1	-	-	1	1	-	-	1	1	-	-	1	1
2 Rung Double Width Ladder Frame	1	-	-	1	1	-	-	1	1	-	-	1	1	-	-	1	1	-	-	1	1
3 Rung Double Width Ladder Frame	-	1	-	1	-	1	-	1	-	1	-	1	-	1	-	1	-	1	-	1	-
3 Rung Double Width Span Frame	-	1	-	1	-	1	-	1	-	1	-	1	-	1	-	1	-	1	-	1	-
4 Rung Double Width Ladder Frame	1	1	2	1	2	2	3	2	3	3	4	3	4	4	5	4	5	5	6	5	6
4 Rung Double Width Span Frame	1	1	2	1	2	2	3	2	3	3	4	3	4	4	5	4	5	5	6	5	6
1.8m Standard Deck	1	1	1	1	1	1	1	1	1	1	1	1	1	1	1	1	1	1	1	1	1
1.8m Hatch Deck	1	2	2	2	2	3	3	3	3	4	4	4	4	5	5	5	5	6	6	6	6
1.8m Horizontal Brace	6	6	10	10	10	14	14	14	14	18	18	18	18	22	22	22	22	26	26	26	26
2.1m Diagonal Brace	3	5	5	7	7	9	9	11	11	13	13	15	15	17	17	19	19	21	21	23	23
1.8m Toeboard Length	1	1	1	1	1	1	1	1	1	1	1	1	1	1	1	1	1	1	1	1	1
Standard Stabiliser Unit	4	4	4	4	4	4	4	4	-	-	-	-	-	-	-	-	-	-	-	-	-
Telescopic Stabiliser Unit	-	-	-	-	-	-	-	-	4	4	4	4	4	4	4	4	4	4	4	4	4





Hilyte 500



- Tested and certified to BSEN1004:2004
- Dual brake on/off system
- Quick release pull rings with stainless steel pin on all bracings
- Smooth & ribbed tubing on braces for quick identification
- Wide ladder with hexagonal rung for easier climb & additional safety
- Large, articulated rubber feet on all stabilisers 3T compatible



Technical Specification

- Two widths available 1.45m & 0.85m
- Three lengths available 1.8m, 2.5m & 3.2m
- Extruded tube diameter 50.8mm
- Extruded tube thickness 1.6mm
- 3mm Frame spigots
- Extruded aluminium ladder stile & rung
- Heat treated gravity castings
- Stainless steel bracing lock pins
- Articulated rubber feet
- Spring steel frame lock clips
- Reinforced platforms

Hilyte 500 Tower Single Width Component Schedule

Component Schedule based on 3T specification. Aluminium toeboard sets available.

	Internal or external work (m)																Internal work only (m)							
Single Width - Platform Heights	1.2	1.7	2.2	2.7	3.2	3.7	4.2	4.7	5.2	5.7	6.2	6.7	7.2	7.7	8.2	8.7	9.2	9.7	10.2	10.7	11.2	11.7	12.2	
150mm dual locking castor	4	4	4	4	4	4	4	4	4	4	4	4	4	4	4	4	4	4	4	4	4	4	4	
Adjustable leg	4	4	4	4	4	4	4	4	4	4	4	4	4	4	4	4	4	4	4	4	4	4	4	
2 rung span frame	-	1	1	-	-	1	1	-	-	1	1	-	-	1	1	-	-	1	1	-	-	1	1	
2 rung ladder frame	-	1	1	-	-	1	1	-	-	1	1	-	-	1	1	-	-	1	1	-	-	1	1	
3 rung span frame	-	1	-	1	-	1	-	1	-	1	-	1	-	1	-	1	-	1	-	1	-	1	-	
3 rung ladder frame	-	1	-	1	-	1	-	1	-	1	-	1	-	1	-	1	-	1	-	1	-	1	-	
4 rung span frame	1	-	1	1	2	1	2	2	3	2	3	3	4	3	4	4	5	4	5	5	6	5	6	
4 rung ladder frame	1	-	1	1	2	1	2	2	3	2	3	3	4	3	4	4	5	4	5	5	6	5	6	
1.8m - 2.5m hatch deck	1	1	1	1	2	2	2	3	3	3	3	4	4	4	4	5	5	5	5	6	6	6	6	
1.8m - 2.5m horizontal brace	6	6	6	6	10	10	10	14	14	14	14	18	18	18	18	22	22	22	22	26	26	26	26	
2.1m - 2.7m diagonal brace	2	3	3	5	5	7	7	9	9	11	11	13	13	15	15	17	17	19	19	21	21	23	23	
1.8m - 2.5m side toeboard	2	2	2	2	2	2	2	2	2	2	2	2	2	2	2	2	2	2	2	2	2	2	2	
Single width toeboard end	2	2	2	2	2	2	2	2	2	2	2	2	2	2	2	2	2	2	2	2	2	2	2	
Standard stabiliser	-	-	4	4	4	4	4	-	-	-	-	-	-	-	-	-	-	-	-	-	-	-	-	
Telescopic stabiliser	-	-	-	-	-	-	-	4	4	4	4	-	-	-	-	4	4	4	-	-	-	-	-	
Large telescopic stabiliser	-	-	-	-	-	-	-	-	-	-	-	4	4	4	4	-	-	-	4	4	4	4	4	

Hilyte 500 Tower Double Width Component Schedule

Component Schedule based on 3T specification. Aluminium toeboard sets available.

	Internal or external work (m)																Internal work only (m)							
Double Width - Platform Heights	1.2	1.7	2.2	2.7	3.2	3.7	4.2	4.7	5.2	5.7	6.2	6.7	7.2	7.7	8.2	8.7	9.2	9.7	10.2	10.7	11.2	11.7	12.2	
150mm dual locking castor	4	4	4	4	4	4	4	4	4	4	4	4	4	4	4	4	4	4	4	4	4	4	4	
Adjustable leg	4	4	4	4	4	4	4	4	4	4	4	4	4	4	4	4	4	4	4	4	4	4	4	
2 rung span frame	-	1	1	-	-	1	1	-	-	1	1	-	-	1	1	-	-	1	1	-	-	1	1	
2 rung ladder frame	-	1	1	-	-	1	1	-	-	1	1	-	-	1	1	-	-	1	1	-	-	1	1	
3 rung span frame	-	1	-	1	-	1	-	1	-	1	-	1	-	1	-	1	-	1	-	1	-	1	-	
3 rung ladder frame	-	1	-	1	-	1	-	1	-	1	-	1	-	1	-	1	-	1	-	1	-	1	-	
4 rung span frame	1	-	1	1	2	1	2	2	3	2	3	3	4	3	4	4	5	4	5	5	6	5	6	
4 rung ladder frame	1	-	1	1	2	1	2	2	3	2	3	3	4	3	4	4	5	4	5	5	6	5	6	
1.8m - 2.5m hatch deck	1	1	1	1	2	2	2	3	3	3	3	4	4	4	4	5	5	5	5	6	6	6	6	
1.8m - 2.5m standard deck	1	1	1	1	1	1	1	1	1	1	1	1	1	1	1	1	1	1	1	1	1	1	1	
2.1m - 2.5m horizontal brace	6	6	6	6	10	10	10	14	14	14	14	18	18	18	18	22	22	22	22	26	26	26	26	
2.1m - 2.7m diagonal brace	2	3	3	5	5	7	7	9	9	11	11	13	13	15	15	17	17	19	19	21	21	23	23	
1.8m - 2.5m side toeboard	2	2	2	2	2	2	2	2	2	2	2	2	2	2	2	2	2	2	2	2	2	2	2	
Double width toeboard end	2	2	2	2	2	2	2	2	2	2	2	2	2	2	2	2	2	2	2	2	2	2	2	
Standard stabiliser	-	-	4	4	4	4	4	4	4	4	4	-	-	-	-	-	-	-	-	-	-	-	-	
Telescopic stabiliser	-	-	-	-	-	-	-	-	-	-	-	4	-	-	-	4	4	4	-	-	-	-	-	
Large telescopic stabiliser	-	-	-	-	-	-	-	-	-	-	-	-	4	4	4	-	-	-	4	4	4	4	4	



Hilyte 250



The new Hilyte Tower has been introduced to our successful Tower and Welded product range, as a result of continuous product research, development and innovation.

The 250mm span frame pitch and double hatchdeck enables users to comply with 3T regulations with ease.

The Hilyte Tower affirms our ongoing commitment to the ever-changing world of Health and Safety in the access equipment industry.



The Hilyte Tower can offer you:

- 250mm pitch span frame for strength, stability and ease of use
- New colour coded braces for effortless assembly
- Smooth and ribbed tubing on braces for quick identification.
- Double hatchdeck for ease of assembly and safe use
- Choice of toeboards: standard wooden, or new aluminium folding unit
- Fully complies with latest regulations, product standards and requirements – including the 3T method of assembly
- Dual brake on/off system
- Castings on every rung
- Quick release
- Large, articulated rubber feet on all stabilisers
- Certified to BSEN1004:2004
- 3T compatible

Hilyte 250 Tower Single Width Component Schedule

Component Schedule based on 3T specification. Aluminium toeboard sets available.

	Internal or external work (m)																Internal work only (m)							
Single Width - Platform Heights	1.2	1.7	2.2	2.7	3.2	3.7	4.2	4.7	5.2	5.7	6.2	6.7	7.2	7.7	8.2	8.7	9.2	9.7	10.2	10.7	11.2	11.7	12.2	
150mm dual locking castor	4	4	4	4	4	4	4	4	4	4	4	4	4	4	4	4	4	4	4	4	4	4	4	
Adjustable leg	4	4	4	4	4	4	4	4	4	4	4	4	4	4	4	4	4	4	4	4	4	4	4	
4 rung access frame	-	2	2	-	-	2	2	-	-	2	2	-	-	2	2	-	-	2	2	-	-	2	2	
6 rung access frame	-	2	-	2	-	2	-	2	-	2	-	2	-	2	-	2	-	2	-	2	-	2	-	
8 rung access frame	2	-	2	2	4	2	4	4	6	4	6	6	8	6	8	8	10	8	10	10	12	10	12	
Hatch deck	1	1	1	2	2	2	2	3	3	3	3	4	4	4	4	5	5	5	5	6	6	6	6	
Horizontal brace	6	6	6	6	10	10	10	14	14	14	14	18	18	18	18	22	22	22	22	26	26	26	26	
Diagonal brace	2	4	3	5	5	7	7	9	9	11	11	13	13	15	15	17	17	19	19	21	21	23	23	
Side toe board	2	2	2	2	2	2	2	2	2	2	2	2	2	2	2	2	2	2	2	2	2	2	2	
End toe board	2	2	2	2	2	2	2	2	2	2	2	2	2	2	2	2	2	2	2	2	2	2	2	
Standard stabiliser	-	-	4	4	4	4	4	-	-	-	-	-	-	-	-	-	-	-	-	-	-	-	-	
Telescopic stabiliser	-	-	-	-	-	-	-	4	4	4	4	-	-	-	-	4	4	4	-	-	-	-	-	
Large telescopic stabiliser	-	-	-	-	-	-	-	-	-	-	-	4	4	4	4	-	-	-	4	4	4	4	4	

Hilyte 250 Tower Double Width Component Schedule

Component Schedule based on 3T specification. Aluminium toeboard sets available.

	Internal or external work (m)																Internal work only (m)							
Double Width - Platform Height	1.2	1.7	2.2	2.7	3.2	3.7	4.2	4.7	5.2	5.7	6.2	6.7	7.2	7.7	8.2	8.7	9.2	9.7	10.2	10.7	11.2	11.7	12.2	
150mm dual locking castor	4	4	4	4	4	4	4	4	4	4	4	4	4	4	4	4	4	4	4	4	4	4	4	
Adjustable leg	4	4	4	4	4	4	4	4	4	4	4	4	4	4	4	4	4	4	4	4	4	4	4	
4 rung access frame	-	2	2	-	-	2	2	-	-	2	2	-	-	2	2	-	-	2	2	-	-	2	2	
6 rung access frame	-	2	-	2	-	2	-	2	-	2	-	2	-	2	-	2	-	2	-	2	-	2	-	
8 rung access frame	2	-	2	2	4	2	4	4	6	4	6	6	8	6	8	8	10	8	10	10	12	10	12	
Hatch deck	1	1	1	2	2	2	2	3	3	3	3	4	4	4	4	5	5	5	5	6	6	6	6	
Standard deck	1	1	1	1	1	1	1	1	1	1	1	1	1	1	1	1	1	1	1	1	1	1	1	
Horizontal brace	6	6	6	6	10	10	10	14	14	14	14	18	18	18	18	22	22	22	22	26	26	26	26	
Diagonal brace	2	4	3	5	5	7	7	9	9	11	11	13	13	15	15	17	17	19	19	21	21	23	23	
Side toe board	2	2	2	2	2	2	2	2	2	2	2	2	2	2	2	2	2	2	2	2	2	2	2	
End toe board	2	2	2	2	2	2	2	2	2	2	2	2	2	2	2	2	2	2	2	2	2	2	2	
Standard stabiliser	-	-	4	4	4	4	4	-	-	-	-	-	-	-	-	-	-	-	-	-	-	-	-	
Telescopic stabiliser	-	-	-	-	-	-	-	4	4	4	4	-	-	-	-	4	4	4	-	-	-	-	-	
Large telescopic stabiliser	-	-	-	-	-	-	-	-	-	-	-	4	4	4	4	-	-	-	4	4	4	4	4	

Stairlyte Tower

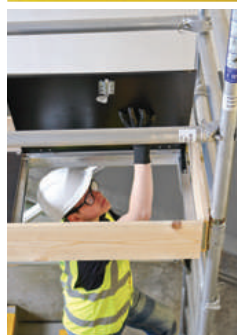
Towers



Stairlyte Tower



- 5 Different platform heights
- 3 Colour coded brace claws
- Wrap around stabiliser clamps
- Access through base tower by using both walk through gates
- Tube to tube welded frames
- 3T Compatible
- Large articulated rubber feet on all stabilisers
- Certified to BSEN:1004 & BS:1139-6
- Base plates as standard
- Choice of toeboards: standard wooden or aluminium folding unit
- Climbing scaffold frame



		2.2m - 1.2m	3.2m - 2.2m	4.2m - 3.2m	5.2m - 4.2m	6.2m - 5.2m
ALU	Adjustable Leg Unit	4	4	4	4	4
Base Plates	Swivel Base Plates	4	4	4	4	4
STGF	Gate Stair Frame	2	2	2	2	2
STGRF/ ALU	1.0m 4 Rung Single Width Frame	1	1	1	1	1
STSF/8/ ALU	2.0m 8 Rung Single Width Frame	0	1	2	3	4
HB13R	1.3m Horizontal Brace	6	6	10	10	14
DB16B	1.64m Diagonal Brace	1	2	3	4	5
DBR17B	1.7m Base Diagonal Brace	1	1	1	1	1
HD13	1.3m Hatch Deck	1	1	2	2	3
TBL13/ ALU/SW	Stairlyte Alloy Toeboard	1	1	1	1	1
TSU	Telescopic Stabiliser Unit	-	2	2	2	2



Lyte Training Solutions

Our training department is on hand to ensure that our products are used safely and correctly. As an accredited member of PASMA and The Ladder Association we offer a wide range of courses for the users of ladders, steps, towers and low level access as well as ladder inspections.



PASMA Professional Training

The Work at Height Regulations 2005, require that the assembly, dismantling or alteration of Mobile Access Towers should only be undertaken by a competent person, or if being trained, under the supervision of a competent person.

A competent person is a person who can demonstrate that they have sufficient professional or technical training, knowledge, actual experience, and authority* to enable them to:

- a. carry out their assigned duties at the level of responsibility allocated to them;
- b. understand any potential hazards related to the work (or equipment) under consideration;
- c. detect any technical defects or omissions in that work (or equipment), recognise any implications for health and safety caused by those defects or omissions, and be able to specify a remedial action to mitigate those implications.

Going onto or assembling a mobile access tower will involve working at height. The Advisory Committee on Work at Height Training (ACWAHT) indicate that for anyone who works at height, the above definition of a competent person implies:

- To know and understand the specific legal duties under the Work at Height Regulations which apply to them as an individual
- To understand who controls their activity and the lines of communication to use
- To understand the principles of fall protection that the Regulations require to be used
- To be able to recognise safe and unsafe situations/activities
 - To understand how to deal with the hazards associated with the task allocated to them
 - To have adequate training in the correct use and limitations of any work equipment allocated to them for the task
- To understand the need for and the ability to check the adequacy of the safety equipment allocated to them
- If that equipment has been issued to them on a personal basis, an understanding of the correct procedure for storage, maintenance and inspection
- To understand safe procedures of work and state the correct procedure for the task, the emergency (including rescue) procedures in place for the work and their role in it
- To know the procedure for reporting any defects, hazards or unsafe procedures they detect
- PASMA therefore sponsors training courses provided only by authorised training members

*** NOTE:**

"Authority" here means delegated authority to the individual by his employer to carry out a certain function or duty.

Ladder Training

Ladders & Step Ladders Training Course.

- Produced in association with TLA
- Nationally recognised



Course contents

- Working at Height Regulations. (WAHR)
- Risk assessments for ladders and step ladders
- Inspection of ladders and step ladders
- Selection of correct type of ladder/stepladder
- Safe use of ladders and step ladders

On completion of the course each delegate will be issued with a BLMA Certificate and a Training Scheme Photo Identification Card.

For further information contact
Lyte Ladders Training Centre:

Tel: 01792 765968

Email: training@lyteladders.co.uk



Conditions of Sale

1. Acceptance and Cancellation

- (1) No order for Seller's goods (whether pursuant to a quotation by Seller or otherwise) is binding on Seller until acknowledged in writing by Seller.
- (2) Each order is subject to other Conditions of Sale to which Buyer shall be deemed to assent.
- (3) No order shall be subject to other conditions or to modifications of these Conditions unless Seller agrees thereto in writing and Seller shall not be deemed to accept such other conditions nor to waive any of these Conditions by failing to object to provisions contained in any purchase order or other communication from Buyer.

2. Seller's Specifications Prices & Charges

- (1) All descriptions, specifications, drawings and particulars of weights and dimensions submitted by Seller are to be deemed approximate only, and descriptions and illustrations in Seller's catalogues, price lists and other advertising matter shall not form any part of contract.
- (2) Until an order has become binding on Seller all prices are subject to change without prior notice.
- (3) After an order has become binding on Seller all prices are subject to variations from time to time in list prices and any variations in costs (including without limitation, costs of materials, labour, transport and any tax, fee or charge imposed by any government or other authority) prior to delivery.

3. Payment

- (1) Unless otherwise agreed by the Seller, or stated in acknowledgement of order, net invoice amount shall become due for payment 30 days from date of invoice.
- (2) Seller reserves the right at any time to demand full or partial payment before proceeding or proceeding further with an order.
- (3) If Buyer defaults in payment Seller may, in addition to exercising right contained in Condition 3(2), delay delivery or cancel contract, also cancel other orders received from Buyer and charge interest on any overdue payment at a rate of 2% per month.

4. Delivery of Goods

- (1) Property in goods shall not pass to the Buyer until the Buyer has paid to the Seller the whole price thereof.

All risk of loss or damage in transit, shall pass to the Buyer when goods delivered to Buyer. Delivery to a carrier or to any person, firm or company on Buyer's behalf shall constitute delivery to the Buyer.

Where goods unassembled, all risk of loss or damage in transit shall pass to Buyer notwithstanding that property in goods may

not have been passed to the Buyer on delivery to Buyer.

- (2) Where goods sold f.o.b. or c.i.f. all risk of loss or damage in transit shall pass to the Buyer when goods placed on board ship, notwithstanding that the property in goods may not have been passed to the Buyer and Seller shall be under no obligation to give to Buyer notice of specified in section 2(3) of Sale of Goods Act, 1983.

- (3) Any time or date specified by Seller as time at which or date on which goods will be delivered given is intended as estimate only and Seller shall not be liable for any loss, damage or expenses whatsoever arising from delay in delivery.

- (4) Buyer shall at request of Seller supply Seller with details necessary to allow Seller to make delivery and shall accept delivery whenever Seller proffers delivery. If Buyer does not comply with foregoing it shall indemnify Seller against any consequent loss, damage or expense and Seller may cancel intended delivery related, without prejudice to its right to claim damages in respect of such breach of contract.

- (5) Seller reserves the right to make delivery by instalments unless otherwise expressly stipulated in contract. Paragraph (6) of this condition shall apply (mutatis mutandis) to each instalment or delivery.

- (6) Delivery of goods of a different description not included in contract shall not entitle Buyer to reject goods delivered and Buyer shall treat such delivery as full performance by Seller and of its contractual duty to deliver.

- (7) Seller shall be entitled to cancel delivery in whole or in part when it is delayed in or prevented from making delivery by strikes, lockouts, trade disputes or labour troubles or any cause beyond Seller's control, including, but without limitation, act of God, act of Buyer, embargo or other government Act, regulation or request, fire, accident, war, riot, delay in transportation, inability to obtain adequate labour, materials or manufacturing facilities. Seller shall not be bound to obtain in market goods with which to replace goods delivery of which has been cancelled as a result of any said events.

5. Notification of Delivery Query

Claims in respect of error in quality, quantity and condition of goods delivered must be made to Seller within 7 days of receipt. Failure to make such notification shall constitute unqualified acceptance of goods and waiver by Buyer of all claims relating to error in quality, quantity and condition of goods delivered. Formal proof of notification will constitute a unique reference number that can be obtained from the seller.

Conditions of Sale

6. Conditions, Warranties & Return of Goods

(1) Each of Seller and Buyer shall be regarded as having received no representation made by or on behalf of other of them before contract was entered into, which in anyway induced it to enter into contract, but this shall not apply to any representation made to one party or on behalf of other which was reduced in writing and signed by or on behalf of representor and was in possession of representee prior to making of contract, and in particular, without prejudice to generality of foregoing those recorded in order or acknowledgement of it.

(2) Seller warrants that it has right to sell goods and that goods are free from any liens unknown to Buyer.

(3) Seller undertakes to repair or replace any goods which are shown by Buyer to Seller's satisfaction to be defective as a result of a defect in materials or workmanship provided:

(i) Buyer within 7 days of receiving goods notifies Seller of such defect and claims to return goods; and

(ii) Seller consents to such return (such consent being, at Seller's option, conditional on goods being returned carriage prepaid) and furnishes Buyer with re-delivery instructions; and

(iii) Seller shall be entitled to make such test or inspection as it thinks fit before consenting to goods being returned accordingly. Buyer shall preserve intact goods which it claims to return for a period of 90 days after such claim is made. Failure to make such a claim shall constitute unqualified acceptance of goods and waiver by Buyer of all claims relating to defects in materials or workmanship. This undertaking shall not apply where an attempt has been made other than by Seller to remove defect or where Seller is satisfied that goods have been improperly used, maintained, stored or serviced.

(4) Where goods are returned by Buyer and accepted as defective by Seller, Seller shall at its option either repair or replace such goods without cost to Buyer or allow Buyer credit therefore. Buyer shall not be entitled to make any claim in respect of such goods for work done thereon, transport costs, loss of profit on resale or in sale respect of claim, loss, damage or expense whatsoever other than replacement cost thereof, nor shall Buyer be entitled to treat delivery of such defective goods as ground for repudiating contract or for cancelling further deliveries, or cancel contract, also cancel other orders received from Buyer and charge interest on any overdue payment

(5) Subject only to paragraph (1) of this condition, no statement, undertaking, warranty or conditions express or implied, statutory or otherwise, not stated in these Conditions shall apply to contract.

(6) Buyer undertakes to indemnify Seller

against all claims relating to goods sold to Buyer by Seller in respect of any loss, damage or expense by any third party, howsoever caused.

(7) In relation to goods not manufactured by the Seller, provisions of this condition shall apply only where Seller is, in its own opinion, entitled to claim from supplier to it the loss, damage or expense made by Buyer from Seller.

7. Exclusions

Save as herein before provided no undertaking, warranty or condition, express or implied, statutory or otherwise, shall apply to contract.

8. Tests and inspections

Unless otherwise agreed any test or inspection other than or in excess of those required in Buyer's specification, shall be conducted at Seller's works and Buyer shall pay a reasonable charge therefor.

9. Patents, etc

In cases where buyer provides drawings, designs, models or specifications, for the purpose of enabling the Seller to provide goods according to Buyer's design, the Buyer shall indemnify the Seller against all actions, claims, costs, damages or losses arising from any infringement of letters patent, design, trademark or copyright protected by law in respect of such drawings, designs, models or specifications or any goods made or supplied by the Seller in compliance therewith.

10. Breach

If Buyer shall default in or commit any breach of any of its obligations to Seller or if any distress or execution shall be levied on any of Buyer's property or if Buyer shall make or offer to make any arrangement or composition with creditors or commit any act of bankruptcy, or if Buyer is a limited company and any resolution or petition to wind-up its business is presented or passed or a receiver appointed of such company's undertaking, property or assets or any part thereof, then Seller shall be entitled forthwith to terminate any order from Buyer then subsisting and on written notice of such termination being posted by it to Buyer's last known address and any and every subsisting order shall be deemed to have been terminated without prejudice to any claim or right which Seller might otherwise make or exercise.

11. Site Work

Where Seller or subcontractor of Seller is involved in delivery of goods to a site, in site work, and/or permanent fixing of goods Special Extra Conditions shall apply, copies of which are obtainable on request.

12. Governing Law

These conditions and all quotations, offers and acceptances shall be construed according to English Law.

Ladder and Stepladder DOs and DON'Ts

Ladders

- ✓ **DO** make sure you carry out a risk assessment
- ✓ **DO** make sure a ladder is the correct piece of equipment for the job
- ✓ **DO** make sure you are using the right classification of ladder
- ✓ **DO** make sure you are wearing the correct footwear
- ✓ **DO** make sure you are wearing a helmet
- ✓ **DO** make sure the ladder is safe and in good condition
- ✓ **DO** make sure it has two serviceable non-slip feet
- ✓ **DO** make sure the rungs are clean and secure
- ✓ **DO** make sure it's on a firm and level base
- ✓ **DO** make sure the ladder is at the right height for the job
- ✓ **DO** make sure it's at the right angle for the job (70 – 75 degrees)
- ✓ **DO** make sure you use a firm grip and three points of contact

- ✓ **DON'T** work near electrical or overhead hazards
- ✓ **DON'T** work in poor weather conditions
- ✓ **DON'T** present a hazard to traffic or passers by
- ✓ **DON'T** overload yourself with tools and materials
- ✓ **DON'T** overreach to complete the task
- ✓ **DON'T** stand on the top three rungs

Step Ladders

Most of the dos and don'ts that apply to ladders also apply to stepladders. In addition:

- ✓ **DO** make sure you work facing forwards
- ✓ **DO** make sure all tools are secure
- ✓ **DON'T** work facing sideways on
- ✓ **DON'T** stand on the top handrail

The above list is for guidance only and is not exhaustive. All these points, and many others, are covered in detail in the Ladder Association's standard training course.



STEP Methodology



Planning ahead

The Ladder Association recommends what it calls the 'Step Methodology' as a vital part of working safely.

SITE

When positioning a ladder, is the ground/resting surface suitably dry, flat, strong and secure? If not, you must adapt the surface or take other measures to prevent the ladder becoming unstable.

TASK

You should not undertake a task using a ladder or stepladder which will require you to work continuously for more than 30 minutes at a time.

EQUIPMENT

Ladders are classified according to general conditions and possible frequency of use.

Industrial Ladders:

For heavy duty where relatively high frequency and onerous conditions of use, carriage and storage occur. BS2037 Class 1 and BS1129 Class 1 ladders are suitable for industrial applications.

Light Trades Ladders:

For medium duty where relatively low frequency and reasonably good conditions of use, carriage and storage occur. BS EN131 ladders are suitable for light trades applications. In addition, the higher rated BS2037 Class 1 and BS1129 Class 1 ladders can also be used for light trades applications.

Domestic Ladders:

For light duty only where frequency of use is low and good carriage and storage conditions occur. BS2037 Class 3 and BS1129 Class 3 ladders are suitable for domestic applications. BS2037 Class 3 and BS1129 Class 3 ladders are NOT suitable for any light trades, trade or industrial applications.

PEOPLE

The Work at Height Regulations state that 'Every employer shall ensure that no person engages in any activity including organisation, planning and supervision in relation to work at height or work equipment for use in such work until he or she is competent to do so, or, if being trained, is supervised by a competent person.

The Ladder Association's Code of Practice covers all these points in detail. For more information visit:

<https://ladderassociation.org.uk/about/code-of-practice/>



For all sales enquiries please call: **01792 796666**

Safe Use of a Scaffold Tower or Mobile Tower



The Work at Height (2005) Regulations

If you are using any item of work at height equipment in the workplace including a scaffold tower, either as an employee or as a self-employed person, the work at height regulations apply to you. You must ensure that not only the person building the tower is competent but also those who specify, use and supervise or manage the use of a tower are competent to do so.

A competent person is a person who can demonstrate that they have sufficient professional or technical training, knowledge, actual experience, and authority* to enable them to:

- Carry out their assigned duties at the level of responsibility allocated to them;
- Understand any potential hazards related to the work (or equipment) under consideration;
- Detect any technical defects or omissions in that work (or equipment), recognise any implications for health and safety caused by those defects or omissions, and be able to specify a remedial action to mitigate those implications.

*** NOTE:**

"Authority" here means delegated authority to the individual by his employer to carry out a certain function or duty.

Basic guidelines

- You must carry out a proper risk assessment before you start work
- You must be competent to build, dismantle, carry out a pre-use inspection on the tower and complete the necessary pre-use inspection record in accordance with the regulations
- The tower components must be inspected at suitable intervals and an appropriate record kept for those inspections

If you are in any doubt about your competence and ability to comply with the regulations, then please ring PASMA on +44 845 230 4041 for further advice.

Don't risk your own life or the lives of others

Use of a scaffold tower or mobile access tower

- Never work on a platform without guardrails
- Never stand on an unprotected platform when building or dismantling a tower
- ALWAYS follow the manufacturer's or supplier's instruction manual
- Ensure that these manuals are available to the operatives erecting and using the tower, and to the person supervising the work
- No manual should mean no tower

Avoid serious injury by choosing your scaffold tower carefully

Tower scaffolds come in many different shapes and sizes so how can you be sure that the one you use is safe?

Simple... ensure that you choose an EN1004 tower!

For more information please
visit www.pasma.co.uk



Lyte Ladders and Towers Limited
Beaufort Reach, Siemens Close,
Enterprise Park, Swansea, SA7 9BB

Tel: **01792 796666**

Sales Fax: 01792 796678

Email: sales@lyteladders.co.uk

www.lyteladders.co.uk